

How to overcome barriers for successful employment

Anna Ludwinek

Latvian Presidency of the EU Council: From
inclusive education to inclusive
employment for people with disabilities

May 2015, Riga

- How to overcome barriers for successful employment
- Measuring disability and employment
- Key Results from the 2011 LFS ad hoc module on employment of people with disabilities

- Covers the working age population (15-64)
- Asks separately about long-term (6 months or more):
 - Difficulties in basic activities (seeing, hearing, walking, bending, remembering, communicating)
 - Health problems or diseases (physical, mental, emotional)
- **Limitations in work**
 - Number of hours that can work in a week
 - Type of work that can do (heavy loads, working outdoors)
 - Getting to or from work

	Difficulties in basic activities	Health problems	Limited in work because of LHPAD
EU-28	14%	27%	11%
Ireland	5%	13%	7%
Greece	7%	13%	7%
Croatia	15%	25%	11%
Finland	22%	54%	18%
Austria	24%	42%	16%

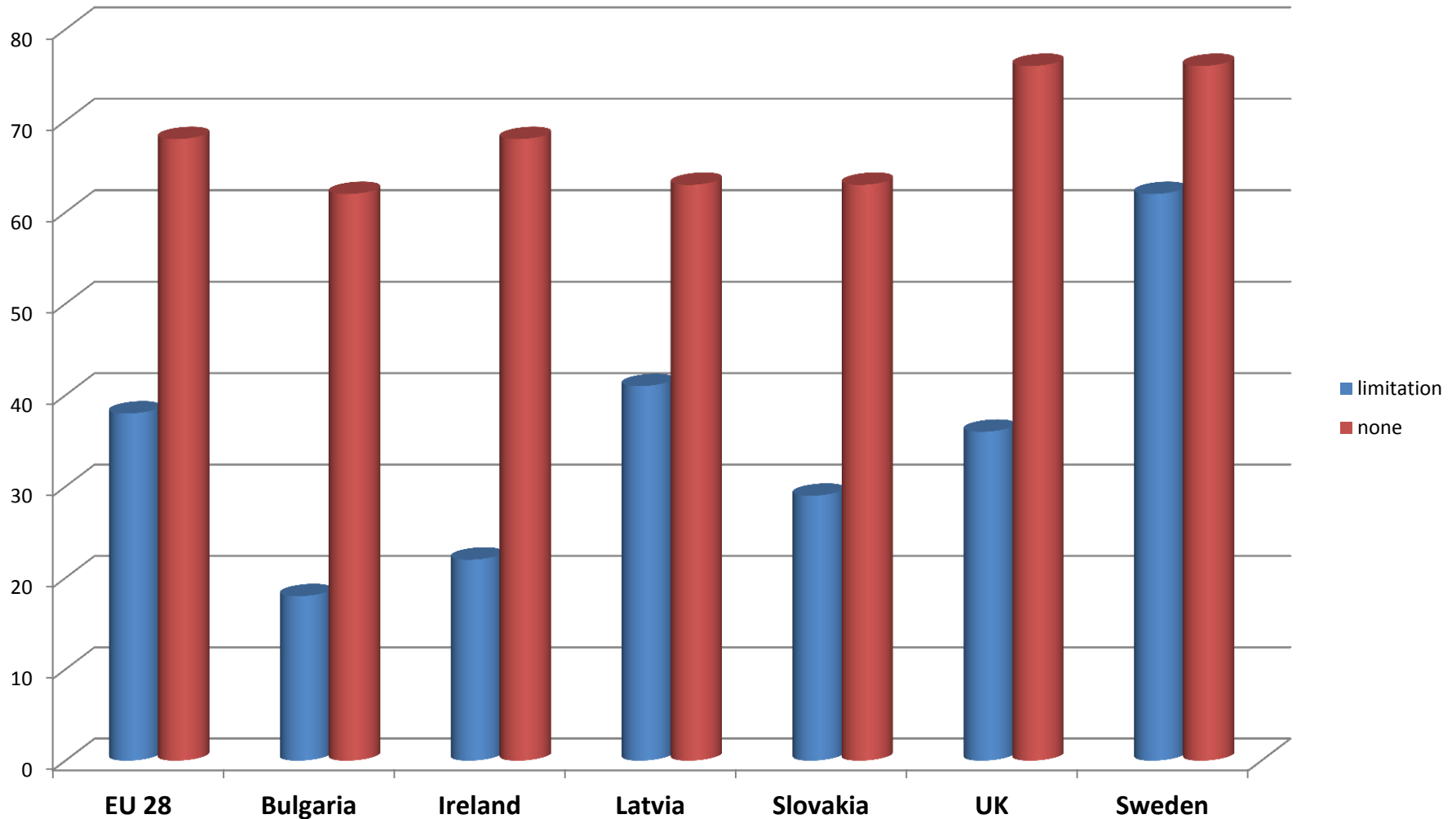
EU 28	27%
Male	25%
Female	28%
Level of education:	High – 22%
	Medium -27%
	Low – 32%

Age	15-24	12%
	25-34	17%
	35-44	23%
	45-54	34%
	55-64	48%

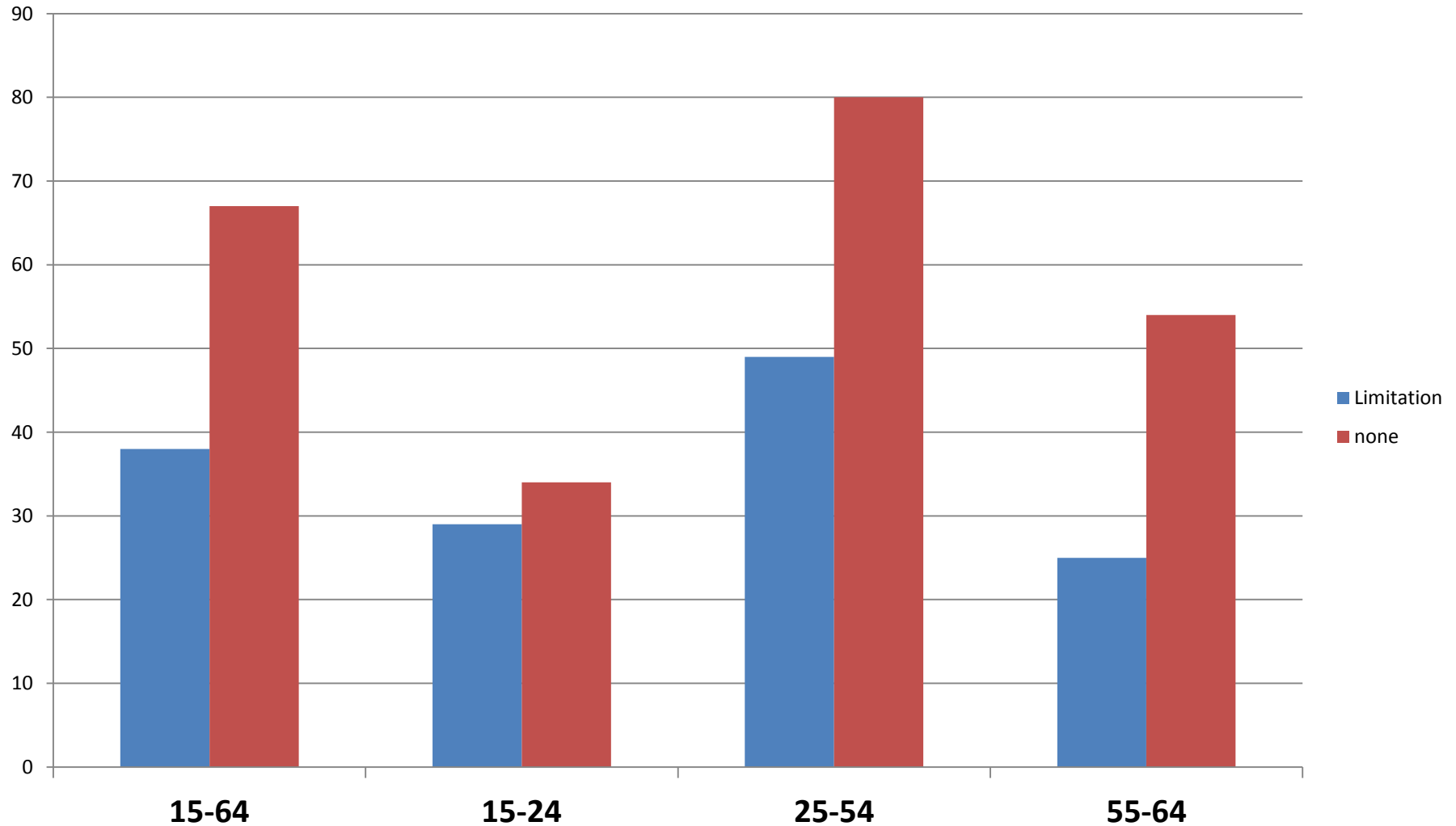
(Similar pattern for difficulty in basic activities)

Labour market status of people with disability aged 15-64 (EU 28)

	Difficulties in basic activities	Limited in work by LHPAD	No disability
	%	%	%
Employed	47	38	68
Unemployed	7	8	7
Inactive	46	54	25



Employment rates for people reporting a work limitation caused by long-standing health problem and/or basic activity difficulty (%) – 1 - by age groups



	Men		Women	
	Limitation	None	Limitation	None
EU 28	41	74	36	62
Bulgaria	20	64	16	60
Ireland	22	66	21	58
Latvia	36	63	43	63
Slovakia	32	70	27	56
UK	38	81	35	71
Sweden	64	78	60	75

	Limitation	None
EU 28	29	58
Bulgaria	23	70
Ireland	28	72
Latvia	43	69
Slovakia	20	57
UK	31	69
Sweden	62	81

Age	Limitation	None
15-64	46	74
15-24	42	43
25-54	59	88
55-64	29	58

	Basic activity difficulty	Limited in work by LHPAD	No disability
Self-employed	14%	17%	14%
In agriculture, forestry, fishing	6%	8%	4%
Part-time	26%	33%	18%
Temporary employment	12%	14%	14%

Thank you

www.eurofound.europa.eu